



THE ROOTS

Fauquier County Cooperative Extension

VOLUNTEERS NEEDED!

Fauquier 4-H is in the process of updating our 4-H Club brochure and we are in need of an English to Spanish translator to help us better reach the Spanish-speaking members of our community. If you are interested in helping to translate our written materials, please reach out to nhollins@vt.edu or you can call the office at 540-422-8250

TABLE OF CONTENTS

3
|
6
|
7
|
9
|
10
|

The Clover Corner

The Ready Ring

The Office Branch

Upcoming Events

Office Contact

Calling all photographers!

Do you have a photo of a Fauquier County landscape that you want featured in our newsletter? Email your photo submissions to Meredith Day at meredithday@vt.edu

(540) 422-8250
24 Pelham Street,
Warrenton, VA 20186
Fauquier County
Cooperative Extension



FAUQUIER
COUNTY
4-H

THE CLOVER CORNER

LOUDOUN-FAUQUIER 4-H JUNIOR CAMP COUNSELOR AND CIT (COUNSELOR IN TRAINING) APPLICATIONS ARE NOW AVAILABLE!

The Loudoun-Fauquier 4-H Junior camp will be held June 15-19, 2025 at the Northern Virginia 4-H Center in Front Royal, VA.

You must be at least 13 on January 1, 2025 in order to be a CIT and at least 14 on January 1, 2025 to be a Counselor. Prior 4-H and/or camp experience is not required to apply.

Information and Application: <https://tinyurl.com/LFCounselorApp25>

Reference Link: <https://tinyurl.com/LF4HCampCounsRef25>

****When you submit your application make sure you have shared this link with your references. You must have at least 2 respond for your application to be complete.****

Please note that all applications (including your three completed online reference forms) are due by Friday, January 10! This is much earlier than previous years! Do Not Wait! Fill it out before the holidays!

*Camper applications open on March 14, 2025. Enrolled 4-H club members will be able to apply early on March 7th via a separate link.

If you have any questions about the application process, please email kmonroe@vt.edu or nhollins@vt.edu



Information and
application link

**2025 LOUDOUN-FAUQUIER
4-H JUNIOR CAMP** June 15-19, 2025
<https://tinyurl.com/LFCounselorApp25>

NOV 15, 2024	Counselor / CIT Applications Now Open
JAN 10, 2025	Counselor / CIT Applications Close
01/28/25	New Counselor Interviews LOUDOUN
01/29/25	New Counselor Interviews FAUQUIER
02/10/25	Returning Counselor Interviews LOUDOUN
02/11/25	Returning Counselor Interviews FAUQUIER

Virginia Cooperative Extension
Virginia Tech • Virginia State University

Virginia Cooperative Extension is a partnership of Virginia Tech, Virginia State University, the U.S. Department of Agriculture, and local governments. Its programs and employment are open to all, regardless of age, color, disability, sex (including pregnancy), gender, gender identity, gender expression, national origin, political affiliation, race, religion, sexual orientation, genetic information, military status, or any other basis protected by law.



Reference link



FAUQUIER
COUNTY
4-H

THE CLOVER CORNER



SAVE
The
DATE



FAUQUIER COUNTY 4-H HORSE SHOW

Saturday, April 5, 2025
Warrenton Horse Show Grounds

More information to follow!



Virginia Cooperative Extension is a partnership of Virginia Tech, Virginia State University, the U.S. Department of Agriculture, and local governments. Its programs and employment are open to all, regardless of age, color, disability, sex (including pregnancy), gender, gender identity, gender expression, national origin, political affiliation, race, religion, sexual orientation, genetic information, military status, or any other basis protected by law.

FAUQUIER COUNTY 4-H HORSE SHOW RETURNS!

We are excited to announce that the Fauquier County 4-H Horse Show will be returning to the Warrenton Show Grounds on April 5, 2025! Keep an eye out for more details to come!

VOLUNTEERS NEEDED!

Fauquier 4-H is in the process of updating our 4-H Club brochure and we are in need of an English to Spanish translator to help us better reach the Spanish-speaking members of our community. If you are interested in helping to translate our written materials, please reach out to nhollins@vt.edu or you can call the office at 540-422-8250

Attention!
¿Hablas español?

VOLUNTEER NEEDED
TO TRANSLATE
ENGLISH—SPANISH
FOR WRITTEN
CONTENT

"Learn by doing."

Virginia
Cooperative
Extension
Virginia Tech • Virginia State University

Virginia Cooperative Extension is a partnership of Virginia Tech, Virginia State University, the U.S. Department of Agriculture, and local governments. Its programs and employment are open to all, regardless of age, color, disability, sex (including pregnancy), gender, gender identity, gender expression, national origin, political affiliation, race, religion, sexual orientation, genetic information, military status, or any other basis protected by law.



FAUQUIER
COUNTY
4-H

THE CLOVER CORNER

THE CLOVER TREE IS BACK!



Thanks to our friends Harold the Holstein and Mr. H. Oinks, the Clover Tree is up! Now through December 13th, the Clover Tree will be set up in the foyer of the Extension Office. Each clover on the tree lists the needs of a local organization. All 4-H families and community members are welcome to grab a clover, fill a box of things to donate, and bring back to the office! Last day for collecting items is Friday December 13th - deliveries begin Monday December 16th!

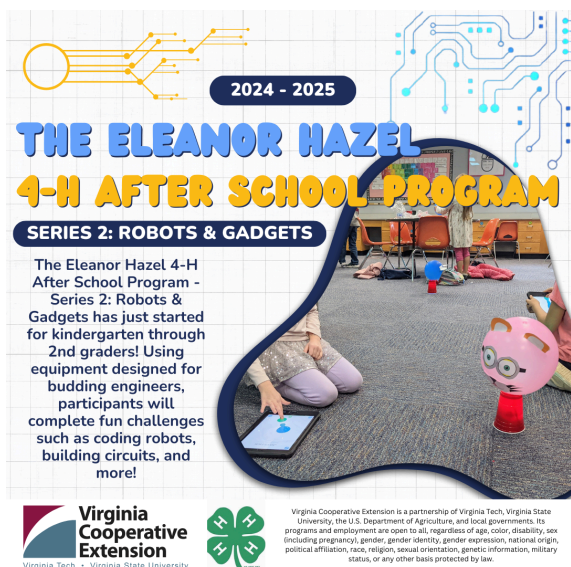
ATTENTION 4-H CLUB REPORTERS!

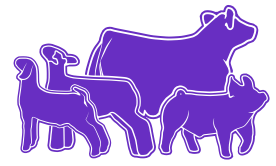
We are launching our segment of the Clover Corner for Club Highlights! Club reporters are invited to send a write-up and photos to meredithday@vt.edu to be featured in the monthly newsletter. Submit by the 20th of each month to be featured in the following month's newsletter. Please include activities your club is doing, when/where your club meets, and any big events or projects coming up! Remember to sign your name and your club.

****first priority will go to clubs who have not yet been featured and/or clubs who submit content first**

THE ELEANOR HAZEL AFTER SCHOOL PROGRAM

The Eleanor Hazel 4-H After School Program - Series 2: Robots & Gadgets has just started for kindergarten through 2nd graders. Using equipment designed for budding engineers, participants will complete fun challenges such as coding robots, building circuits, and more!





FAUQUIER LIVESTOCK SHOW & SALE BEEF WEIGH-IN RECAP

On the chilly morning of November 3rd, Fauquier Livestock Show & Sale weighed in 23 market beef projects for 19 beef exhibitors! The youth committee worked together to line up trailers, collect entries, man scale gates, tag animals, record weights, and more! Market beef cattle are weighed-in the first weekend in November, then again in May the weekend of Show & Sale. Exhibitors grow their animals for 180 project days to compete for Rate of Gain - a contest to see whose animal gains the most pounds each day!

Huge thanks to all the parents and volunteers who support these great kiddos and their projects. We're looking forward to a great project season. Be on the lookout for opportunities to support these members!



2025 SHOW & SALE REMINDERS

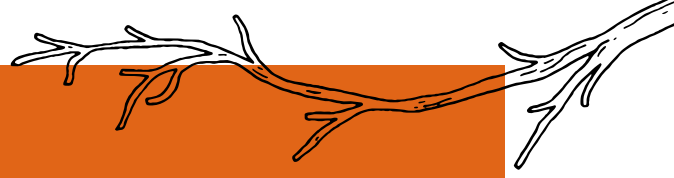
Saturday January 11, 2025 Cattle clinic - optional - registration will open early December

Wednesday January 15, 2025 cattle mid-point weights DUE

Sunday February 2, 2025 lamb and goat weigh-in 7AM-9AM Fauquier Fairgrounds Barn

Wednesday February 12, 2025 Buyers Mixer (3rd mandatory meeting) 6PM Fauquier Fairgrounds Building

Wednesday February 12, 2025 Market hog and breeding animal entries DUE



THINKING ABOUT BUYING A LIVE CHRISTMAS TREE?

Having a Christmas tree that can be planted into the yard after the holiday is a great way to invest in the landscape and keep your Christmas tree years after the holiday.

This does take a few considerations.

1. Plan for the potential size of the tree in your garden. It may get very big one day, or you can use a dwarf/slow growing evergreen. Purchase a tree that will grow well in Virginia.
2. Acclimate the tree to some warmer temperatures by keeping it in a garage or porch for a couple of days before bringing it indoors.
3. One to two weeks is all that a potted Christmas tree should stay in the house. Outdoor trees will find your house very stressful. Keep the soil damp but not soggy, keep the tree away from heat vents and fireplaces.
4. Acclimate the tree back outdoors in a similar way as done before in a garage or on a porch for a couple of days.
5. Plant the tree in the garden as soon as possible. Keep the soil line the same as it was in the pot and add a couple of inches of mulch to help protect the roots from drying out and drastic temperature swings.

As an alternative, Norfolk Island pine (*Araucaria heterophylla*) is a conifer that makes a good houseplant and can be kept indoors year-round. It will not grow to 200 feet or live for 100 years as it does in its native island in the South Pacific, but you can keep it for many years.



2024 Pesticide Applicator Certification Prep Course Warrenton

December 9 & 11 – **Category 3A Ornamental**

December 16 & 17 – **CORE Pesticide Prep**

CORE Training for: Registered Tech., Private and Commercial
Applicator

December 18- **Optional review session**

December 18- **Exam(s)**

8:30am – 3pm

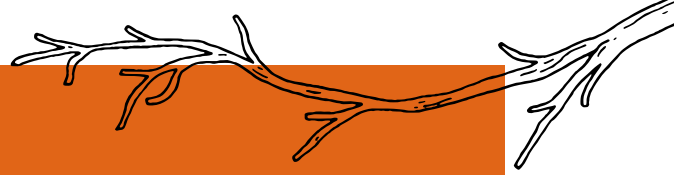


Questions? Contact Fauquier County Virginia
Cooperative Extension

Sharon Broyles at 540.422.8250 x 0

sbroyles@vt.edu

UPCOMING EVENTS



UPCOMING FAUQUIER VCE OFFICE CLOSURE DATES:

December 24th-January 2nd | Closed

CLOVER CALENDAR

December 13 | Clover Tree donations
DUE

January 10 | Camp Counselor/CIT
applications due

January 22 | 4-H Day at the Capitol

January 28-29 | New Camp Counselor
interviews



FAUQUIER
COUNTY
4-H

SHOW & SALE CALENDAR

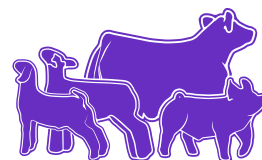
January 11 | Cattle Clinic

January 15 | Cattle mid-point weights due

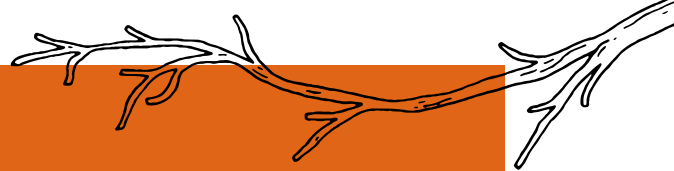
February 2 | Lamb and goat weigh-in

February 12 | Buyer's Mixer

February 12 | Hog and breeding animal
entries due



OFFICE CONTACT



TIMOTHY MIZE	tmize@vt.edu	540-422-8250 ext. 2	Extension Agent, Animal Science
TIM OHLWILER	tohlwile@vt.edu	540-422-8250 ext. 3	Extension Agent, Horticulture
MARY OTT PRADOS	maryvo@vt.edu	540-422-8250 ext. 4	Extension Agent, 4-H Youth Development
NICOLE HOLLINS	nhollins@vt.edu	540-422-8250	Extension Agent, 4-H After-School
SHARON BROYLES	sbroyles@vt.edu	540-422-8250 ext. 0	Unit Administrative Assistant
ADAM DOWNING	adowning@vt.edu	540-948-6881	Extension Agent, Forestry Housed in Madison
KENNER LOVE	klove@vt.edu	540-675-3619	Extension Agent, ANR, Crop and Soil Sciences Housed in Rappahannock
CARL STAFFORD	ccstaffo@vt.edu	540-727-3435 ext. 351	Extension Agent, Agriculture and Natural Resources Housed in Culpeper
LENAH NGUYEN	lgeer@vt.edu	540-727-3435 ext. 342	Extension Agent, Family and Consumer Sciences Housed in Culpeper